

# *CCBHC Consumer Satisfaction Survey Report*

*Bridge Counseling Associates  
[McLeod]*

---

*September 2022 | Draft 1.0*



*Nevada Division of Health Care Financing and Policy  
Department of Health and Human Services*

# Table of Contents

---

- EXECUTIVE SUMMARY ..... 1**
- PEC QUALITY MEASURE ..... 2**
  - ACCESS ..... 2
  - QUALITY AND APPROPRIATENESS QUESTIONS ..... 3
  - OUTCOMES ..... 4
  - PARTICIPATION IN TREATMENT ..... 5
  - GENERAL SATISFACTION WITH SERVICES ..... 5
  - FUNCTIONING ..... 6
  - SOCIAL CONNECTEDNESS ..... 7
  - SINGLE QUARTER BREAKDOWN: PEC QUALITY MEASURE ..... 8
- Y/FEC QUALITY MEASURE ..... 13**
  - ACCESS ..... 13
  - CULTURAL SENSITIVITY ..... 14
  - GENERAL SATISFACTION WITH SERVICES ..... 15
  - OUTCOMES ..... 16
  - PARTICIPATION IN TREATMENT ..... 17
  - SOCIAL CONNECTEDNESS ..... 18
  - SINGLE QUARTER BREAKDOWN: Y/FEC QUALITY MEASURE ..... 19
- APPENDIX A. ADULT CONSUMER SATISFACTION SURVEY RESULTS ..... 23**
- APPENDIX B. YOUTH CONSUMER SATISFACTION SURVEY RESULTS ..... 24**
- APPENDIX C. PARENT/CHILD CONSUMER SATISFACTION SURVEY RESULTS ..... 25**

# Executive Summary

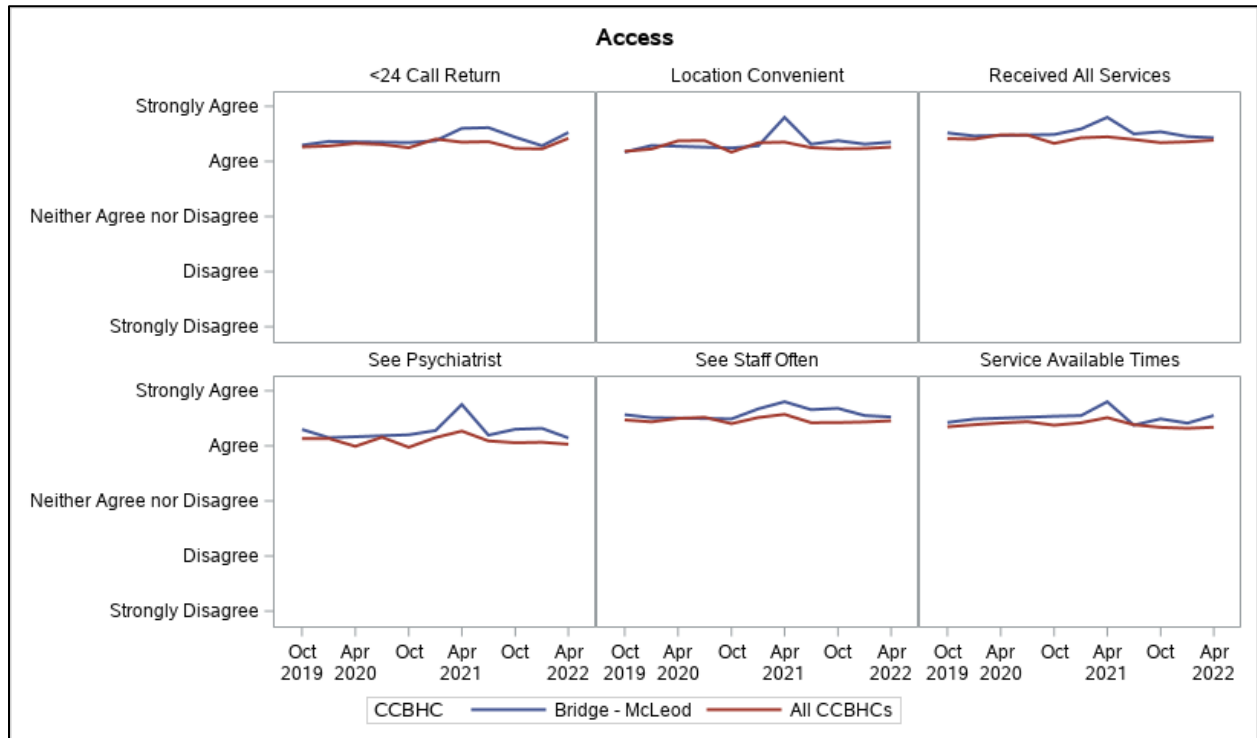
---

The purpose of this report is to highlight the results from the Consumer Satisfaction Surveys (CSS) that were conducted at the Certified Community Behavioral Health Centers (CCBHC) in Nevada. For the purposes of this report, survey data were aggregated to quarterly periods. It is important to note that not all surveys were conducted during all quarters and will be a limitation when examining trends. Due to low sample sizes for certain surveys, monthly trends were not examined.

In order to accurately assess the patient satisfaction at the various CCBHCs in Nevada, it is imperative to increase the sample size and frequency of conducting the CSS. This will help facilities obtain a representative sample, mitigate issues associated with small sample sizes, and identify areas for improvement.

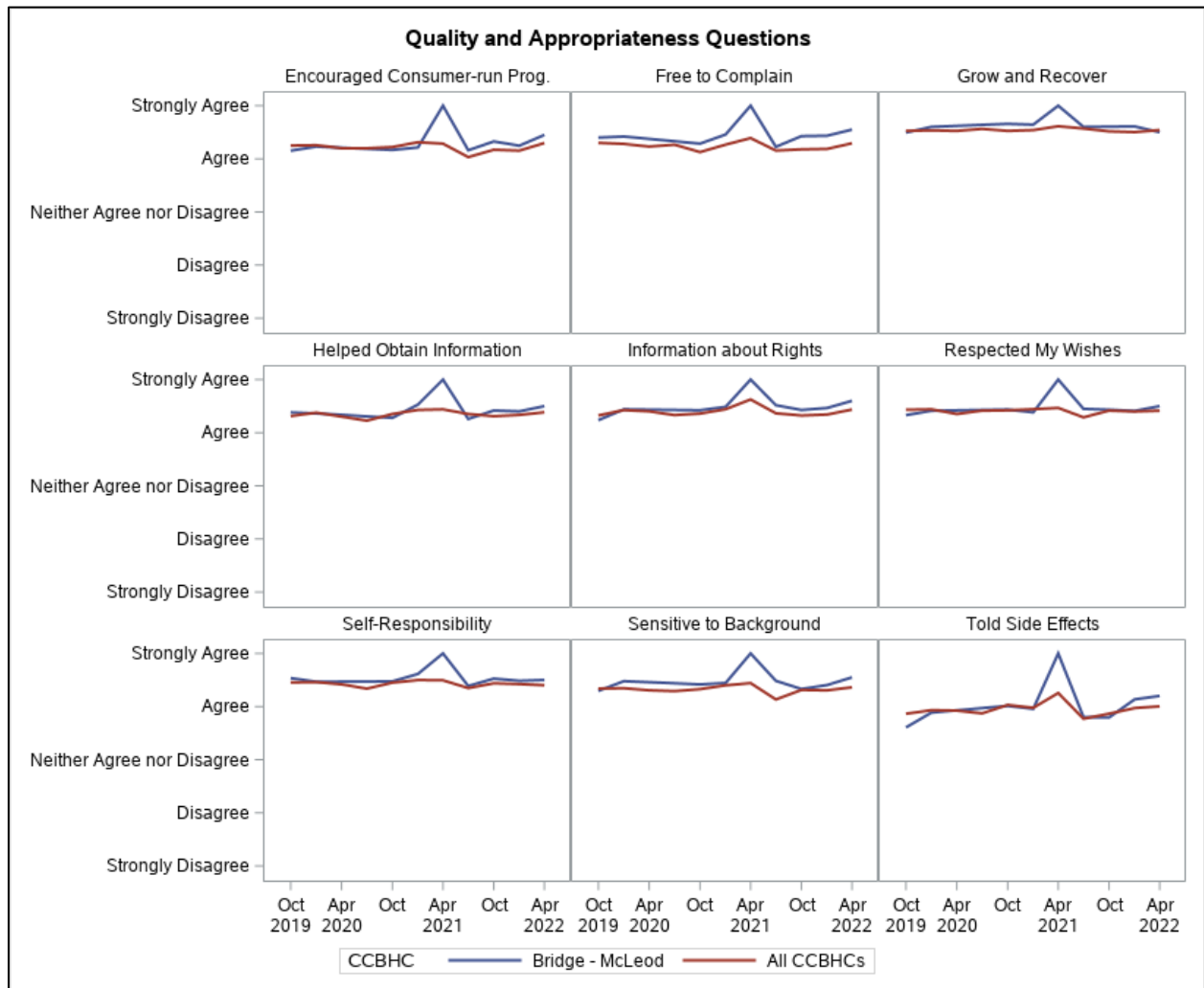
# PEC Quality Measure

## Access



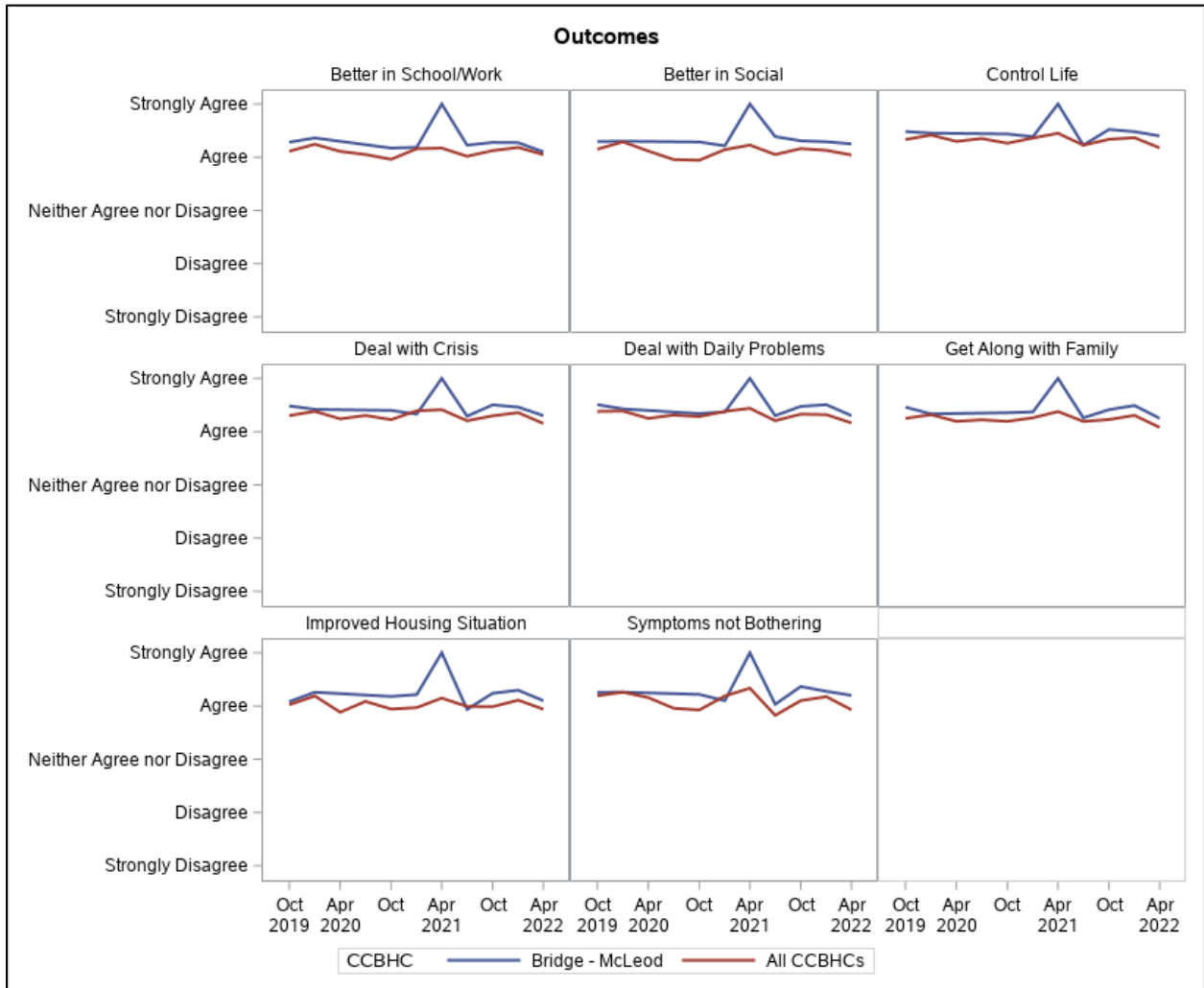
\*Reflects survey responses for the Adult Consumer Satisfaction Survey.

## Quality and Appropriateness Questions



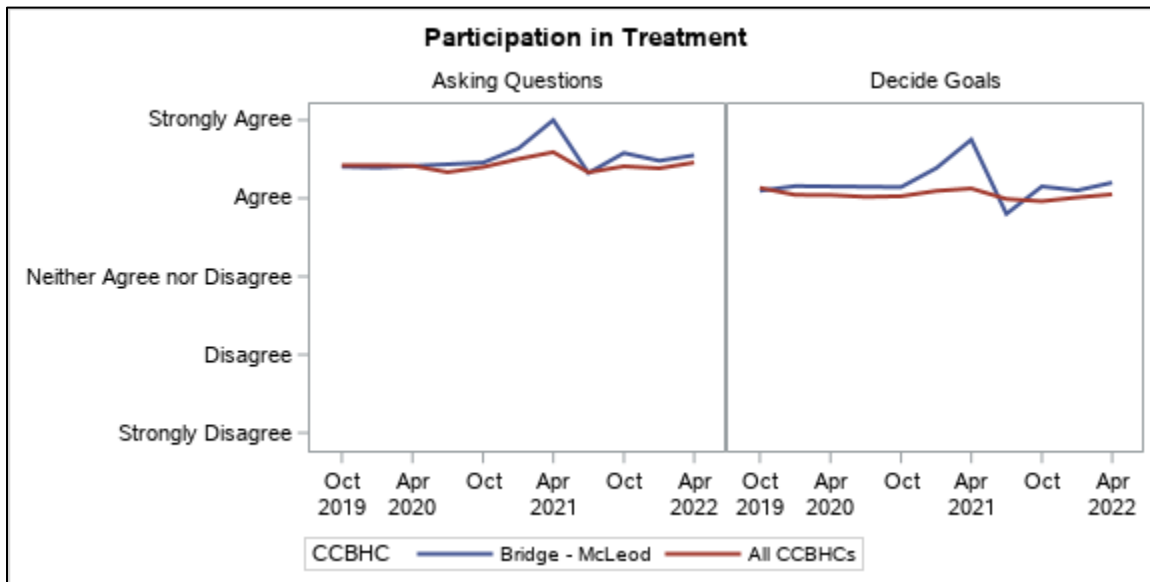
\*Reflects survey responses for the Adult Consumer Satisfaction Survey.

# Outcomes



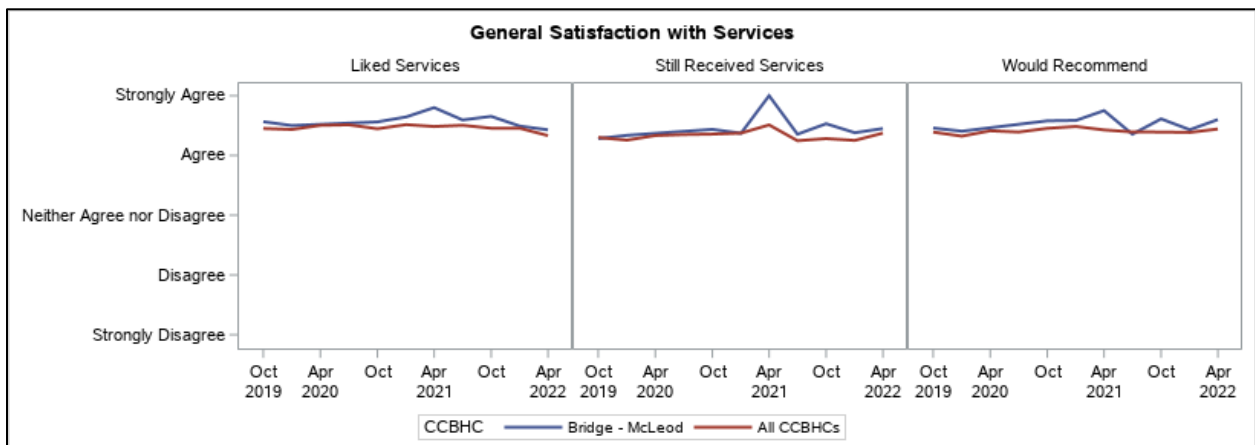
\*Reflects survey responses for the Adult Consumer Satisfaction Survey.

## Participation in Treatment



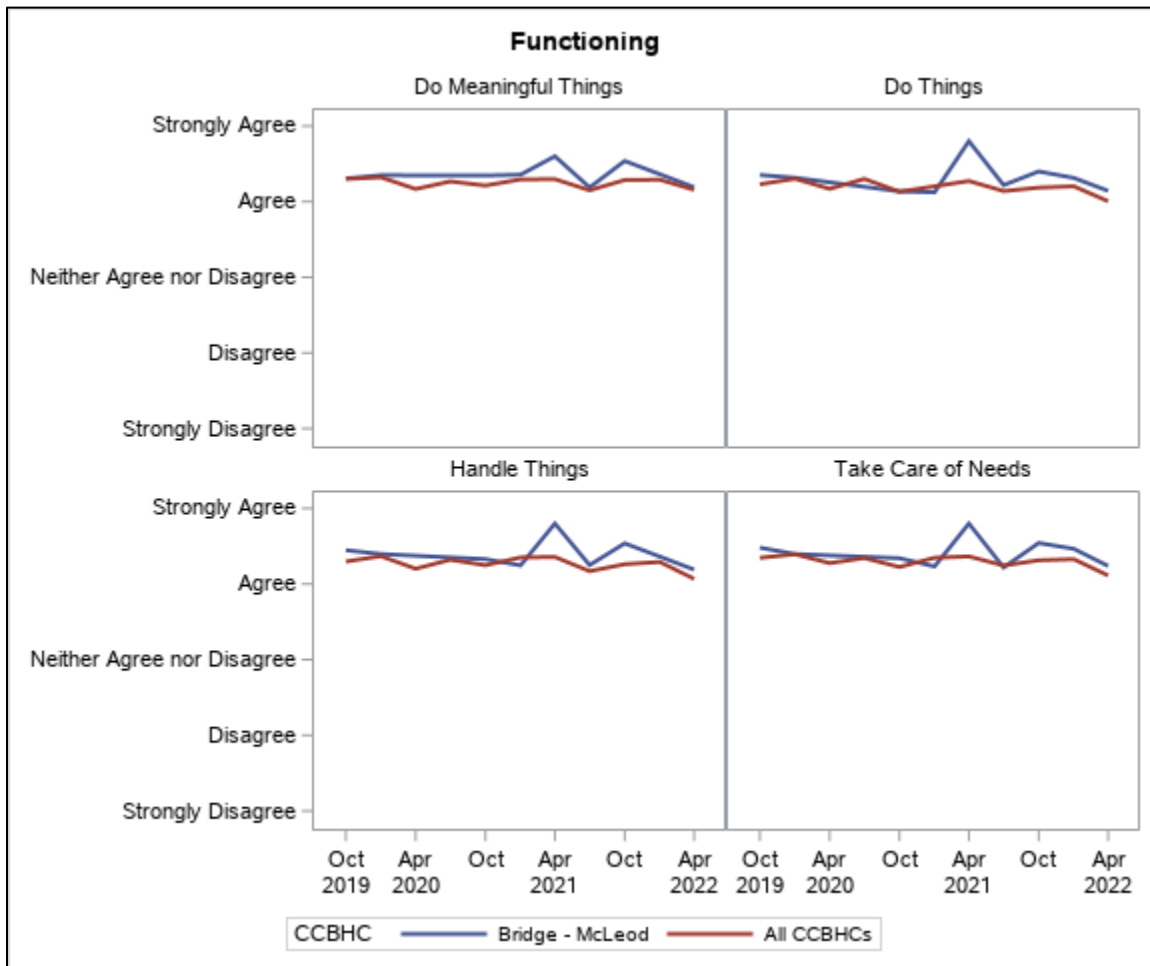
\*Reflects survey responses for the Adult Consumer Satisfaction Survey.

## General Satisfaction with Services



\*Reflects survey responses for the Adult Consumer Satisfaction Survey.

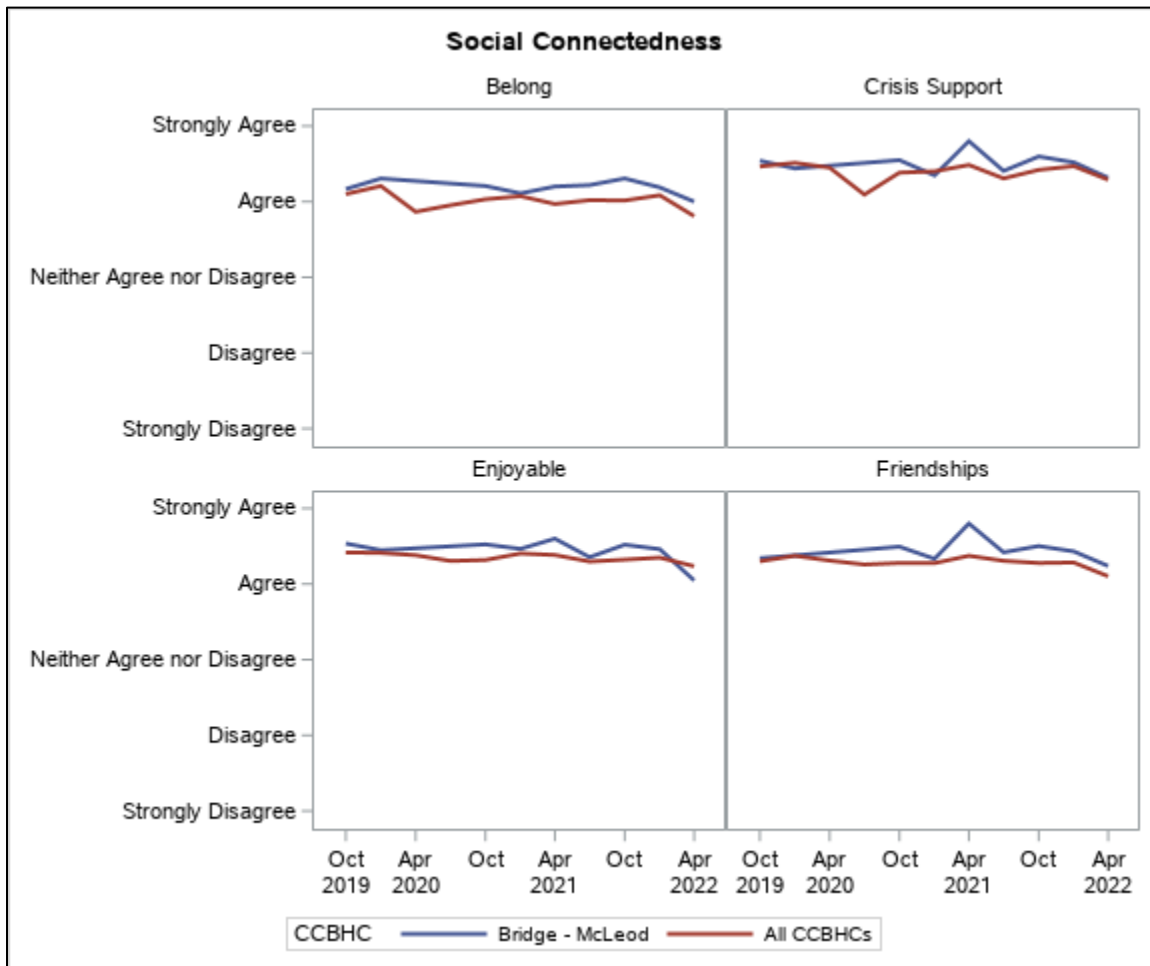
# Functioning



\*Reflects survey responses for the Adult Consumer Satisfaction Survey.



## Social Connectedness

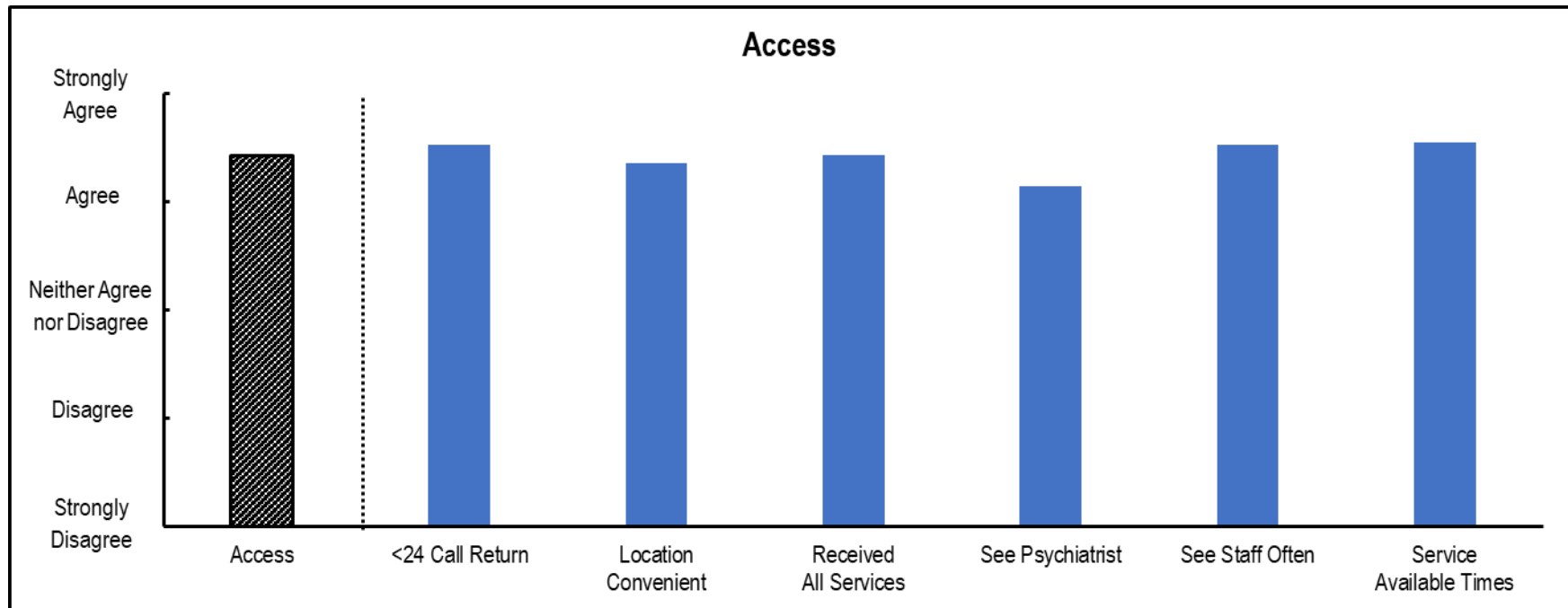


\*Reflects survey responses for the Adult Consumer Satisfaction Survey.

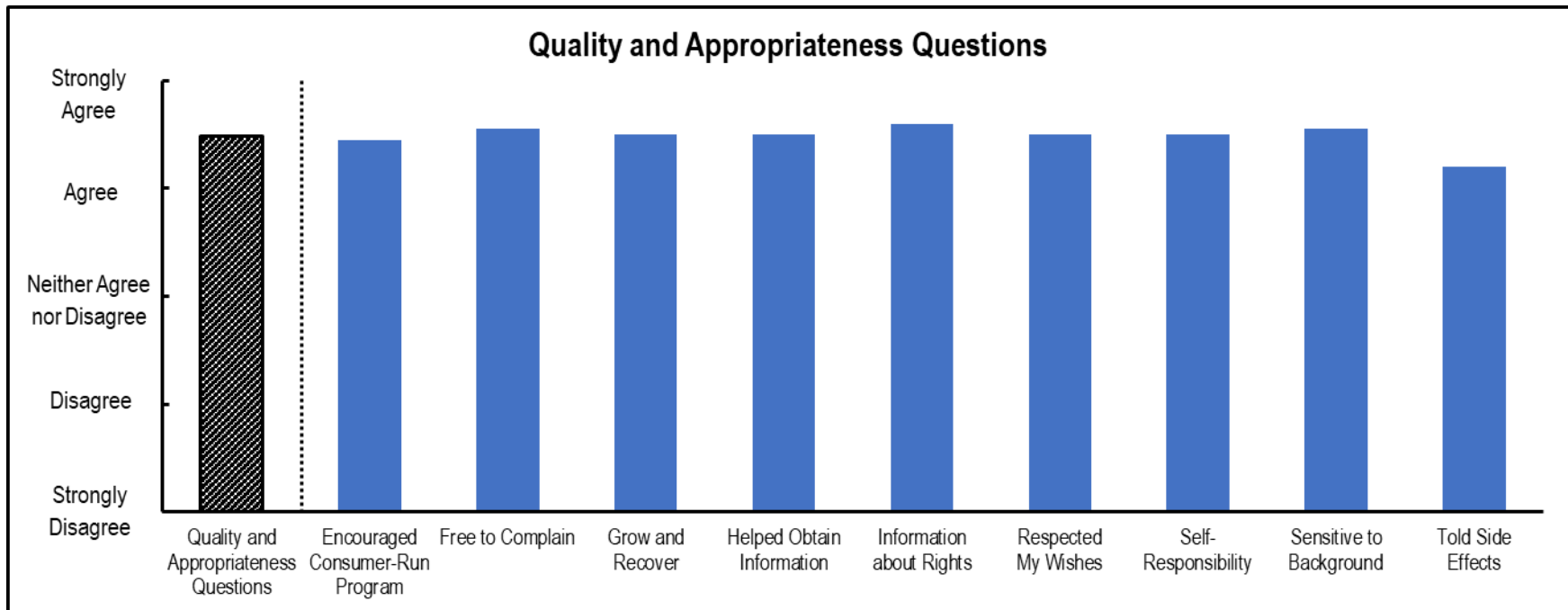
## Single Quarter Breakdown: PEC Quality Measure

Date: Q2 2022

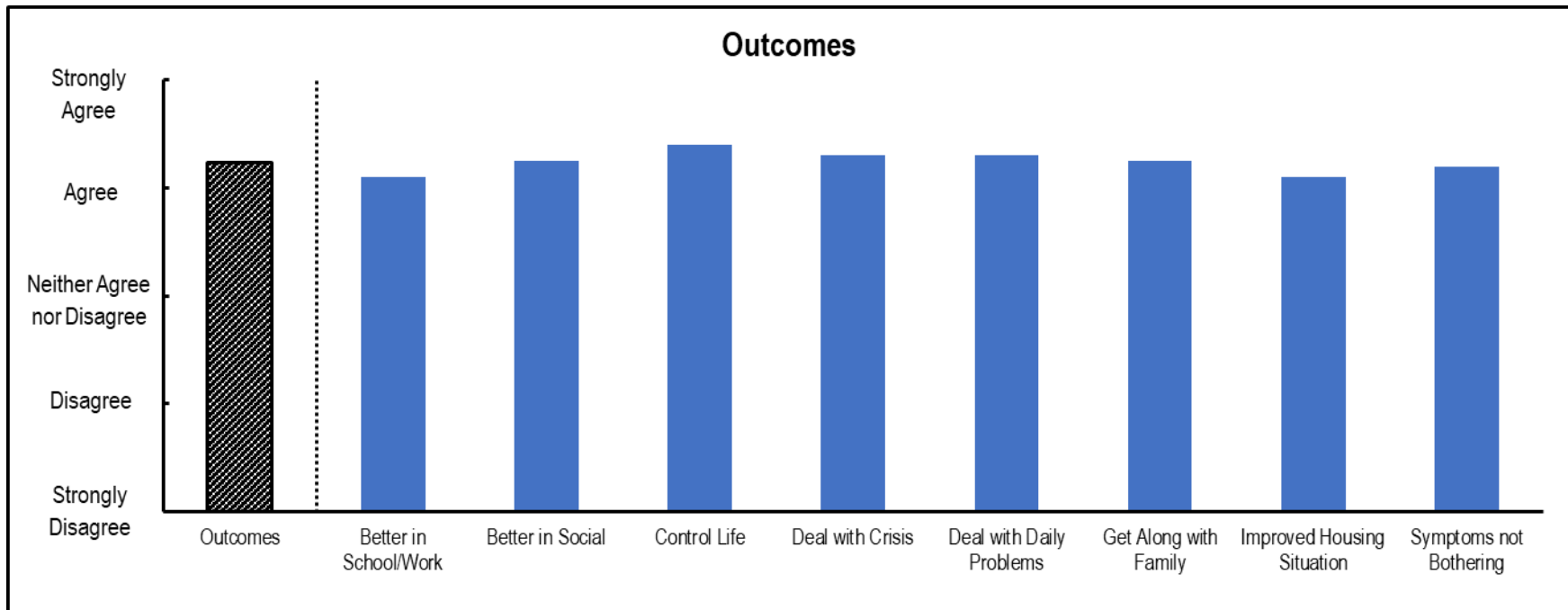
N = 21



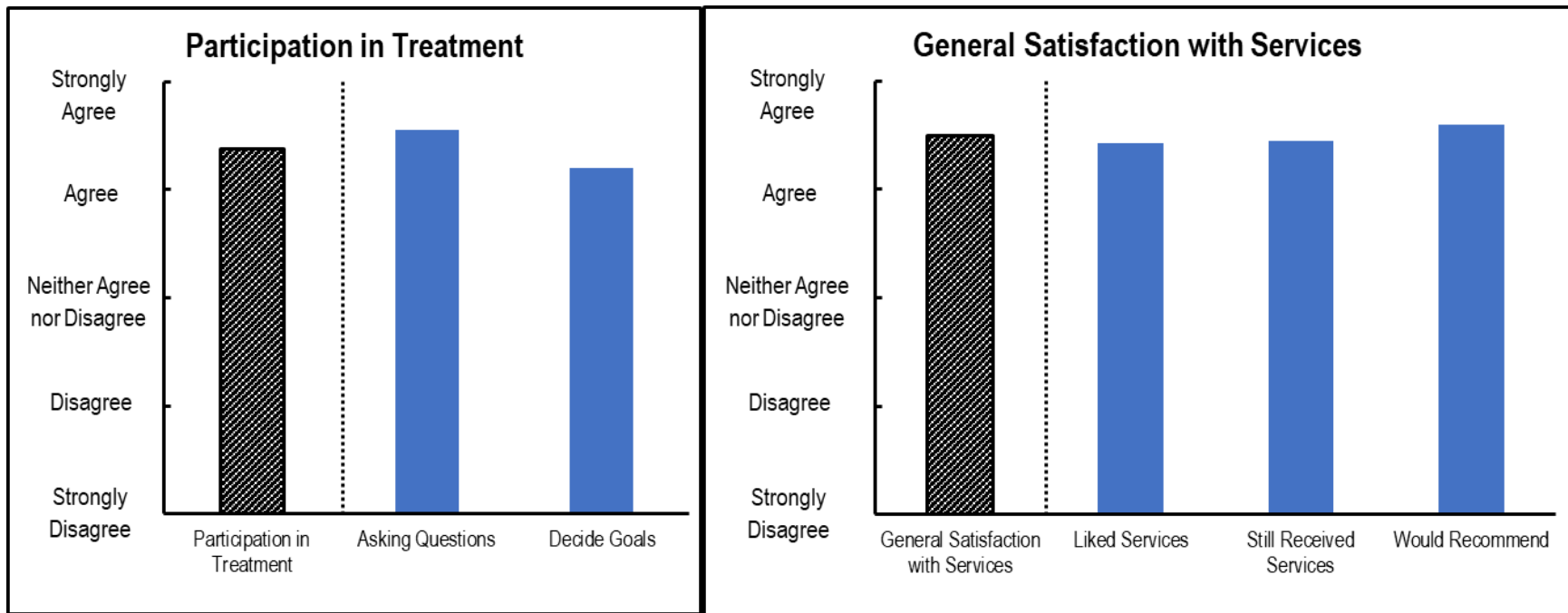
*\*Reflects survey responses for the Adult Consumer Satisfaction Survey.*



*\*Reflects survey responses for the Adult Consumer Satisfaction Survey.*

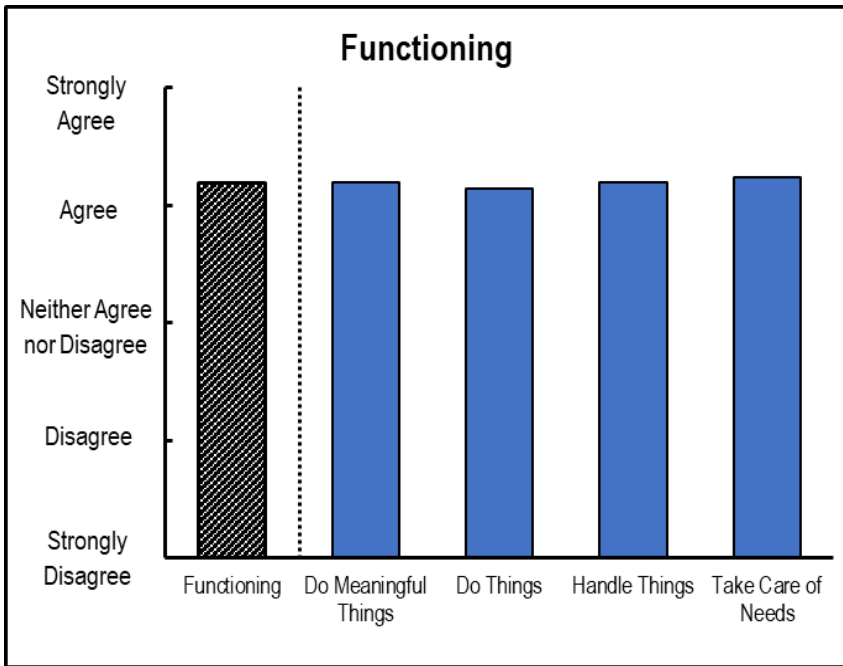


*\*Reflects survey responses for the Adult Consumer Satisfaction Survey.*

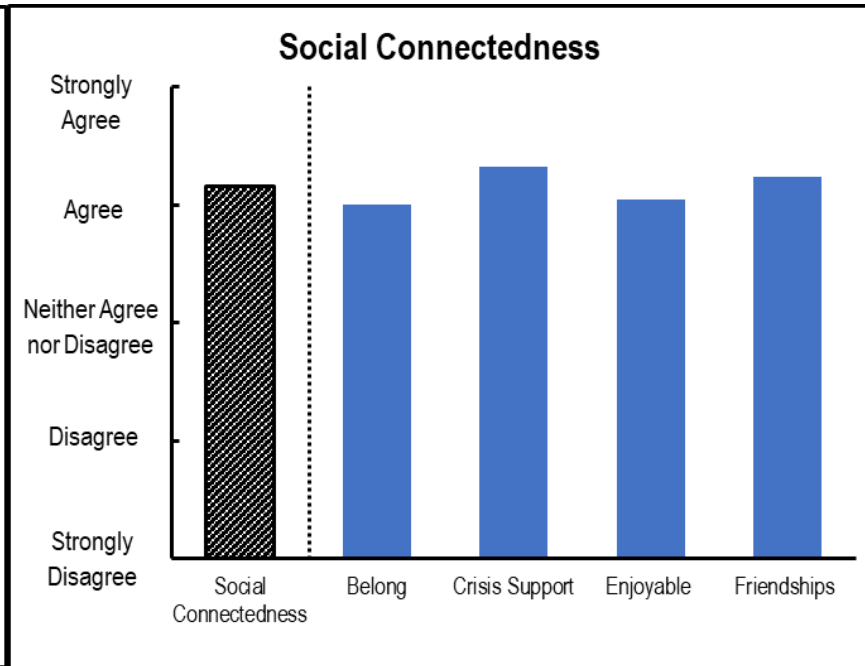


*\*Reflects survey responses for the Adult Consumer Satisfaction Survey.*

*\*Reflects survey responses for the Adult Consumer Satisfaction Survey.*



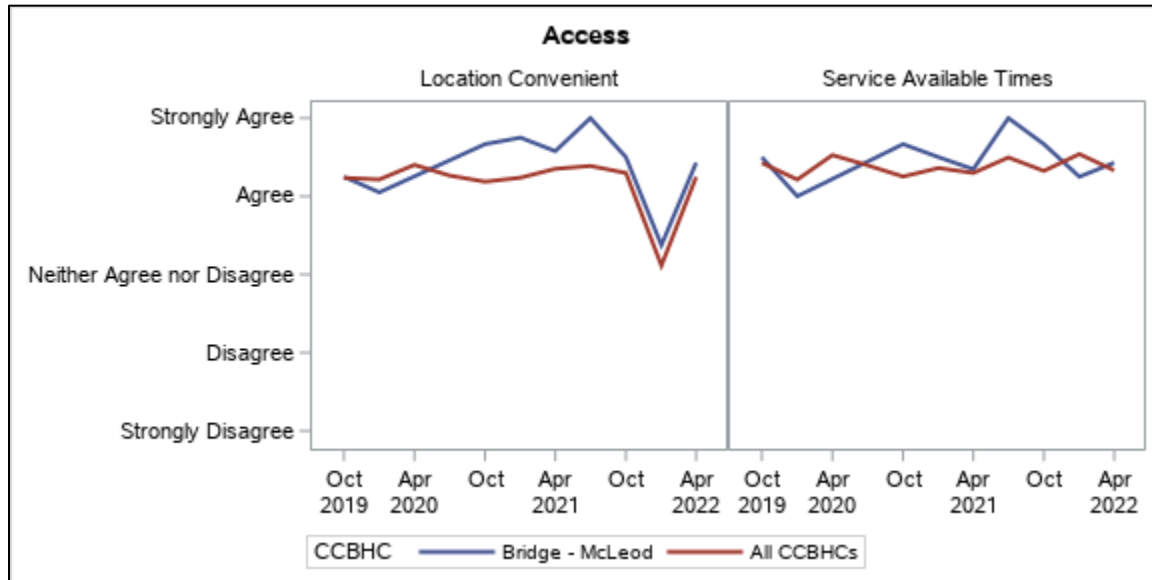
*\*Reflects survey responses for the Adult Consumer Satisfaction Survey.*



*\*Reflects survey responses for the Adult Consumer Satisfaction Survey.*

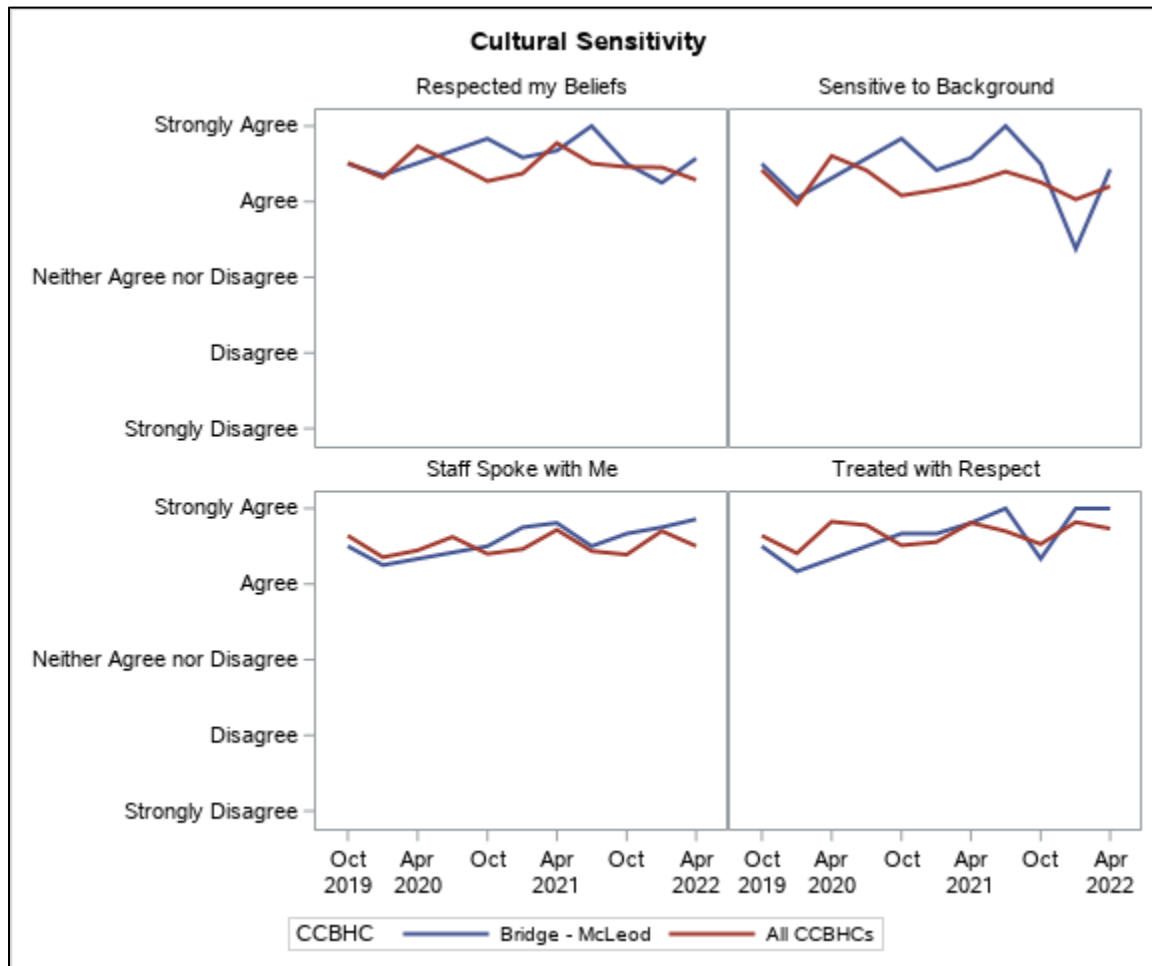
# Y/FEC Quality Measure

## Access



\*Reflects survey responses for the Youth Consumer Satisfaction Survey and Parent/Child Consumer Satisfaction Survey.

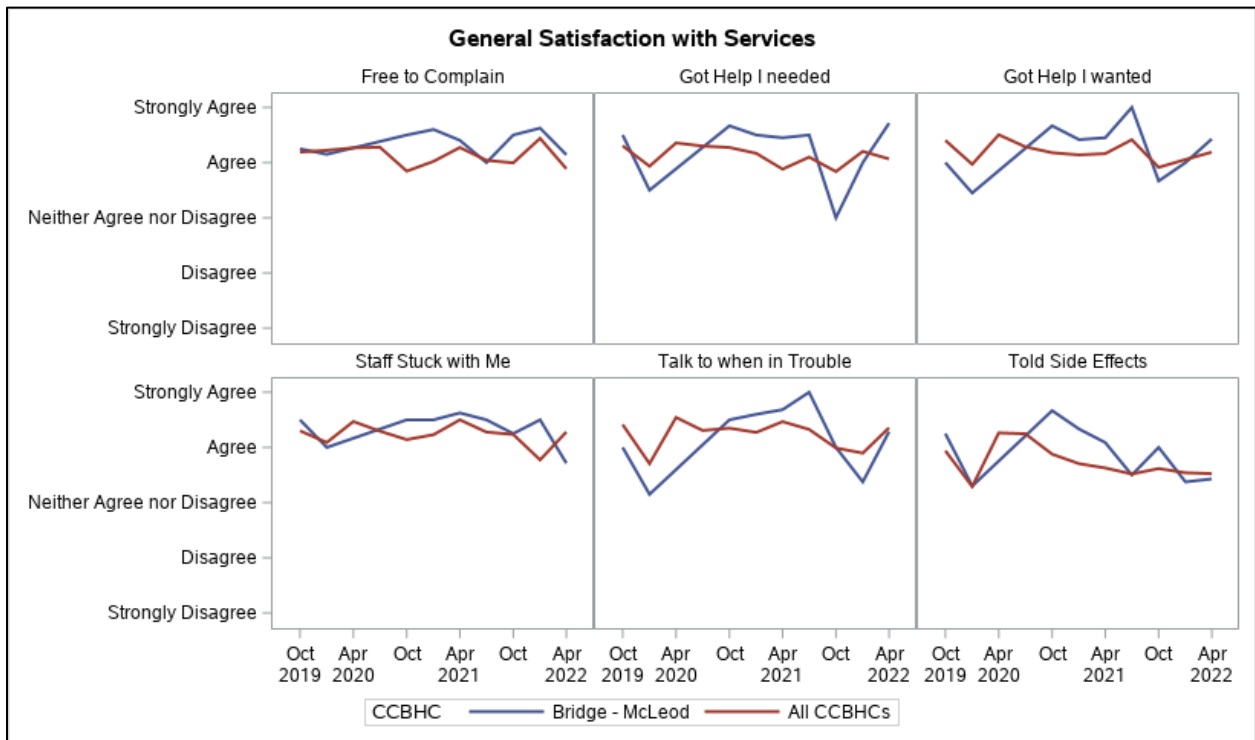
## Cultural Sensitivity



\*Reflects survey responses for the Youth Consumer Satisfaction Survey and Parent/Child Consumer Satisfaction Survey.

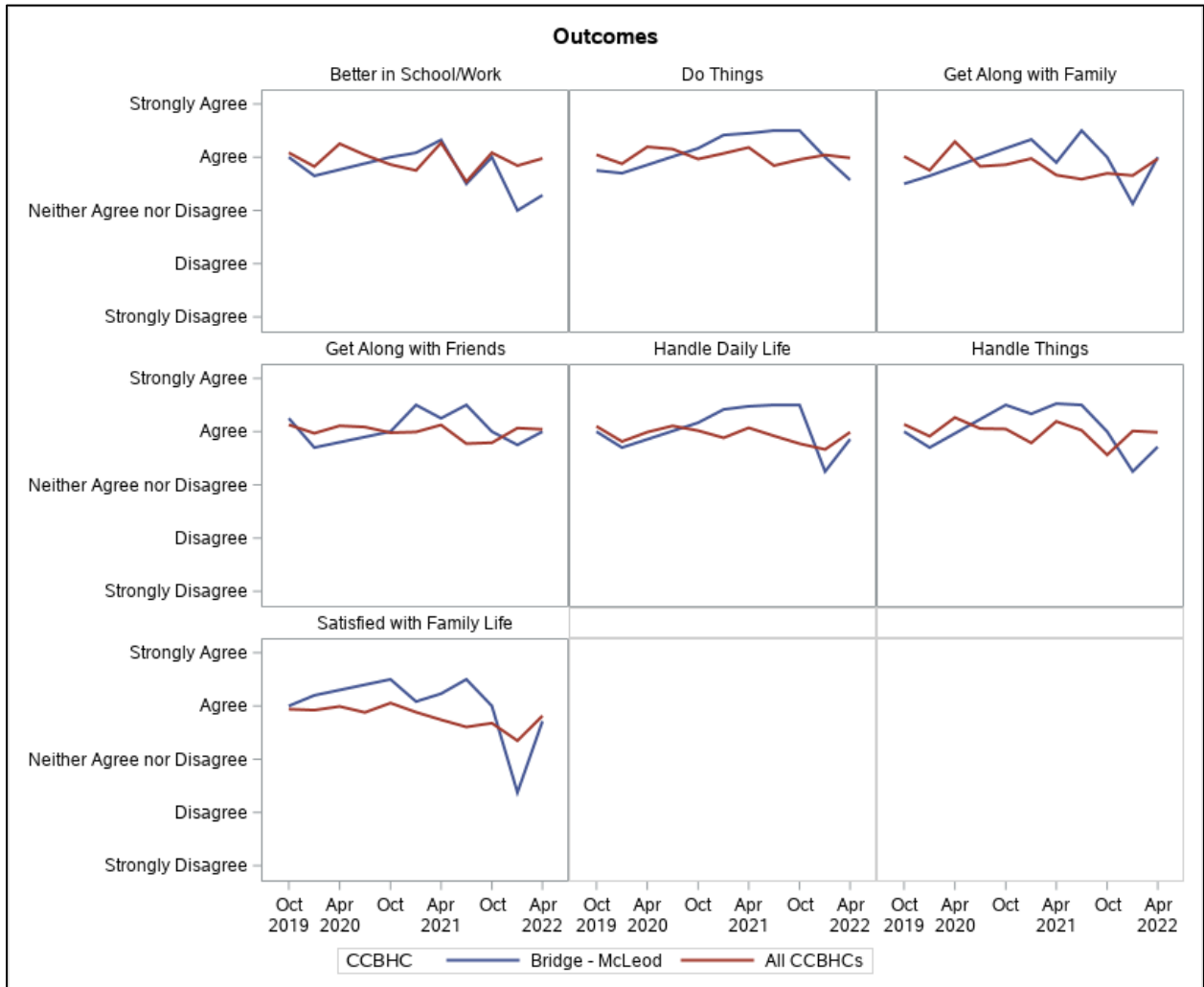


## General Satisfaction with Services



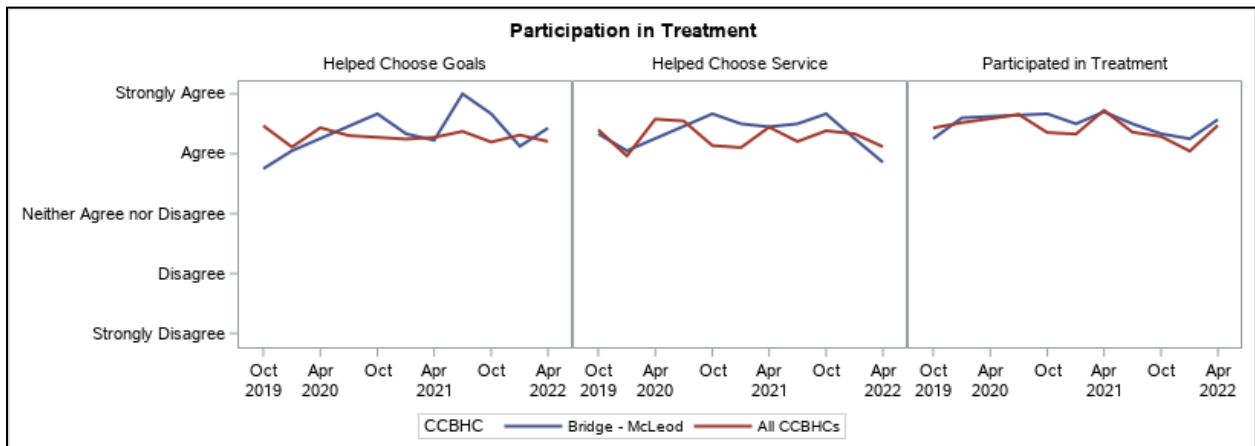
\*Reflects survey responses for the Youth Consumer Satisfaction Survey and Parent/Child Consumer Satisfaction Survey.

# Outcomes



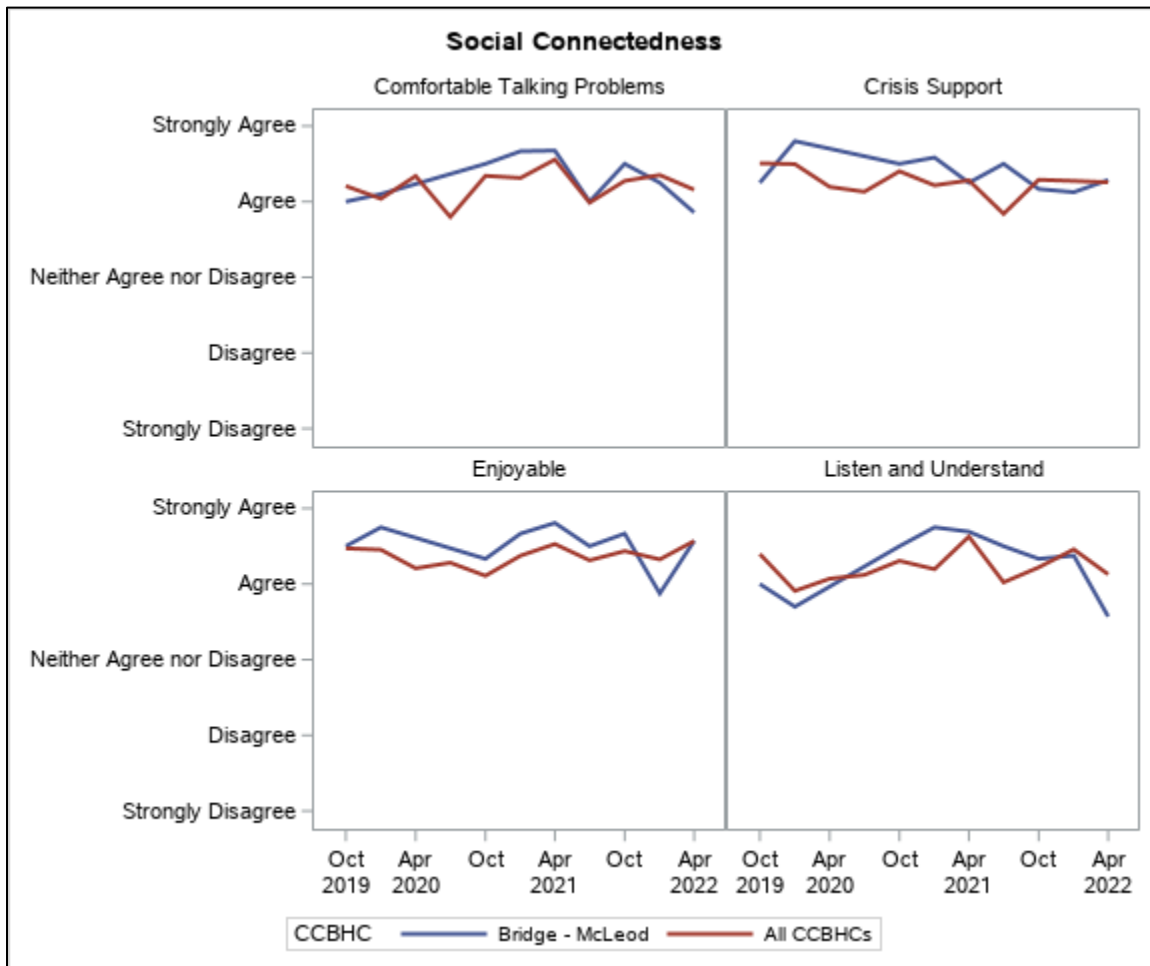
\*Reflects survey responses for the Youth Consumer Satisfaction Survey and Parent/Child Consumer Satisfaction Survey.

## Participation in Treatment



\*Reflects survey responses for the Youth Consumer Satisfaction Survey and Parent/Child Consumer Satisfaction Survey.

## Social Connectedness

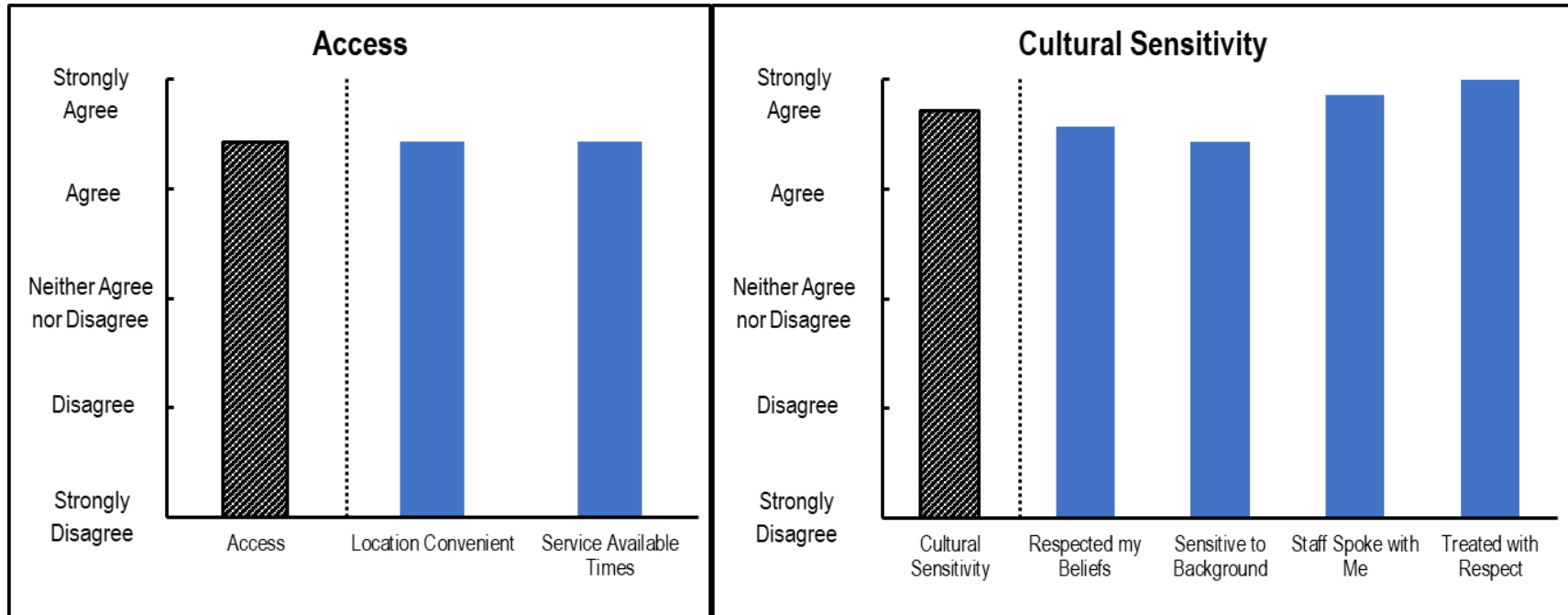


\*Reflects survey responses for the Youth Consumer Satisfaction Survey and Parent/Child Consumer Satisfaction Survey.

## Single Quarter Breakdown: Y/FEC Quality Measure

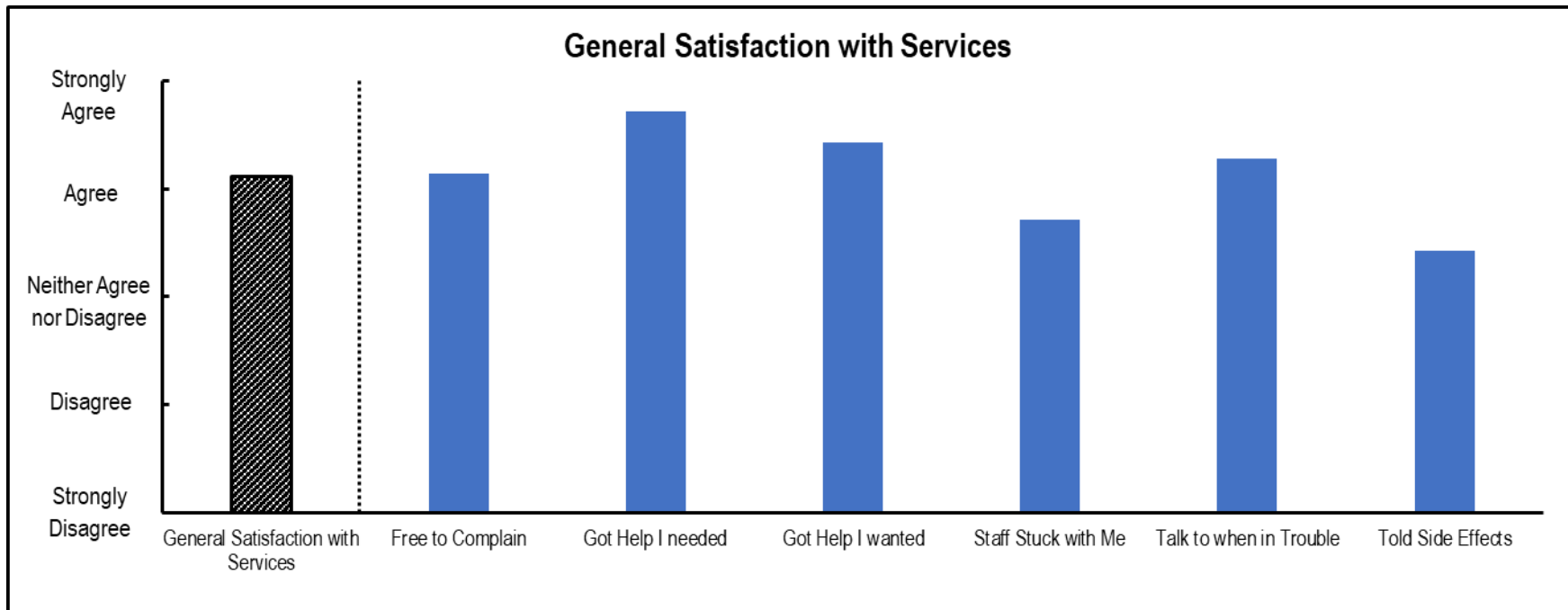
Date: Q2 2022

N = 7

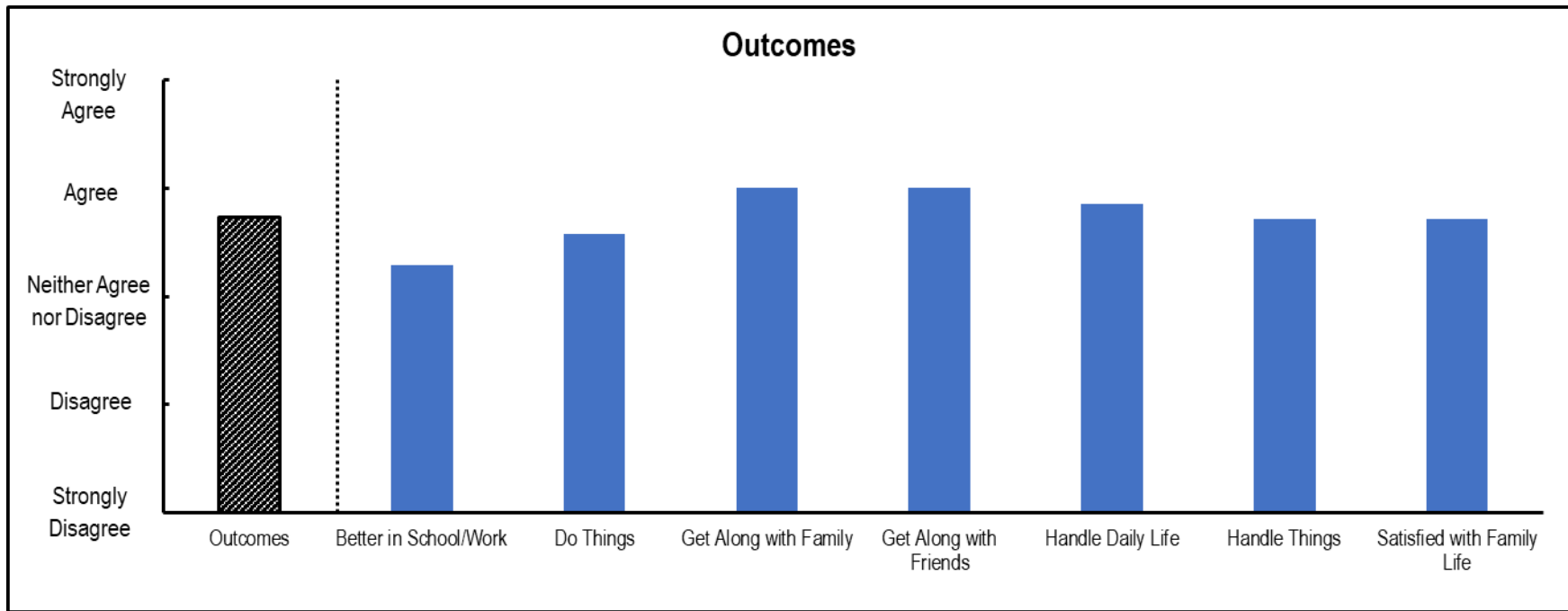


*\*Reflects survey responses for the Youth Consumer Satisfaction Survey and Parent/Child Consumer Satisfaction Survey.*

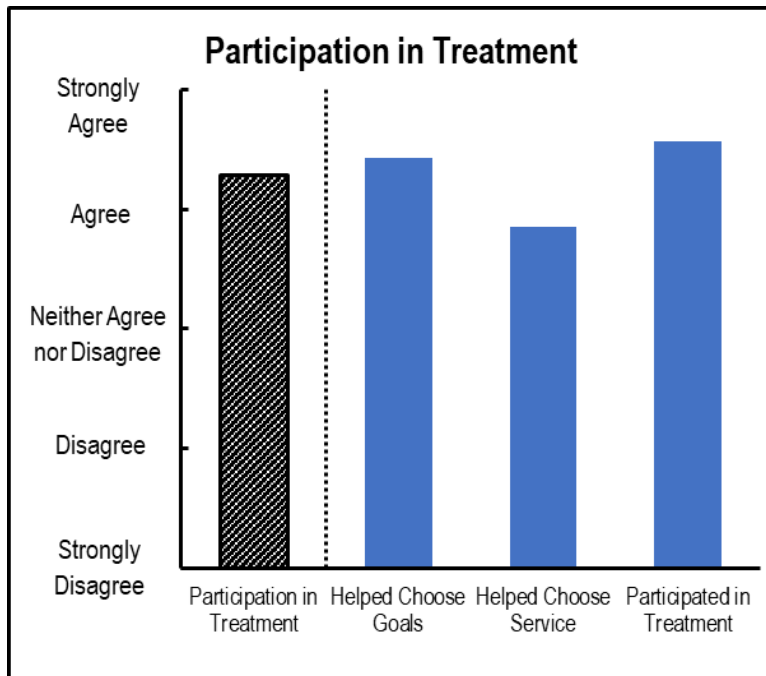
*\*Reflects survey responses for the Youth Consumer Satisfaction Survey and Parent/Child Consumer Satisfaction Survey.*



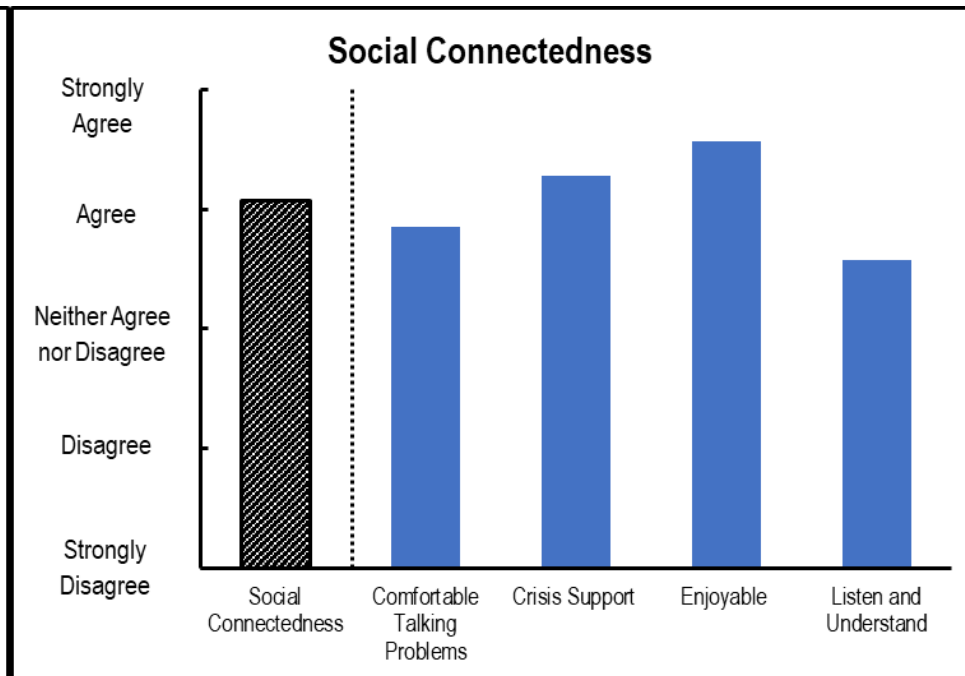
*\*Reflects survey responses for the Youth Consumer Satisfaction Survey and Parent/Child Consumer Satisfaction Survey.*



*\*Reflects survey responses for the Youth Consumer Satisfaction Survey and Parent/Child Consumer Satisfaction Survey.*



*\*Reflects survey responses for the Youth Consumer Satisfaction Survey and Parent/Child Consumer Satisfaction Survey.*

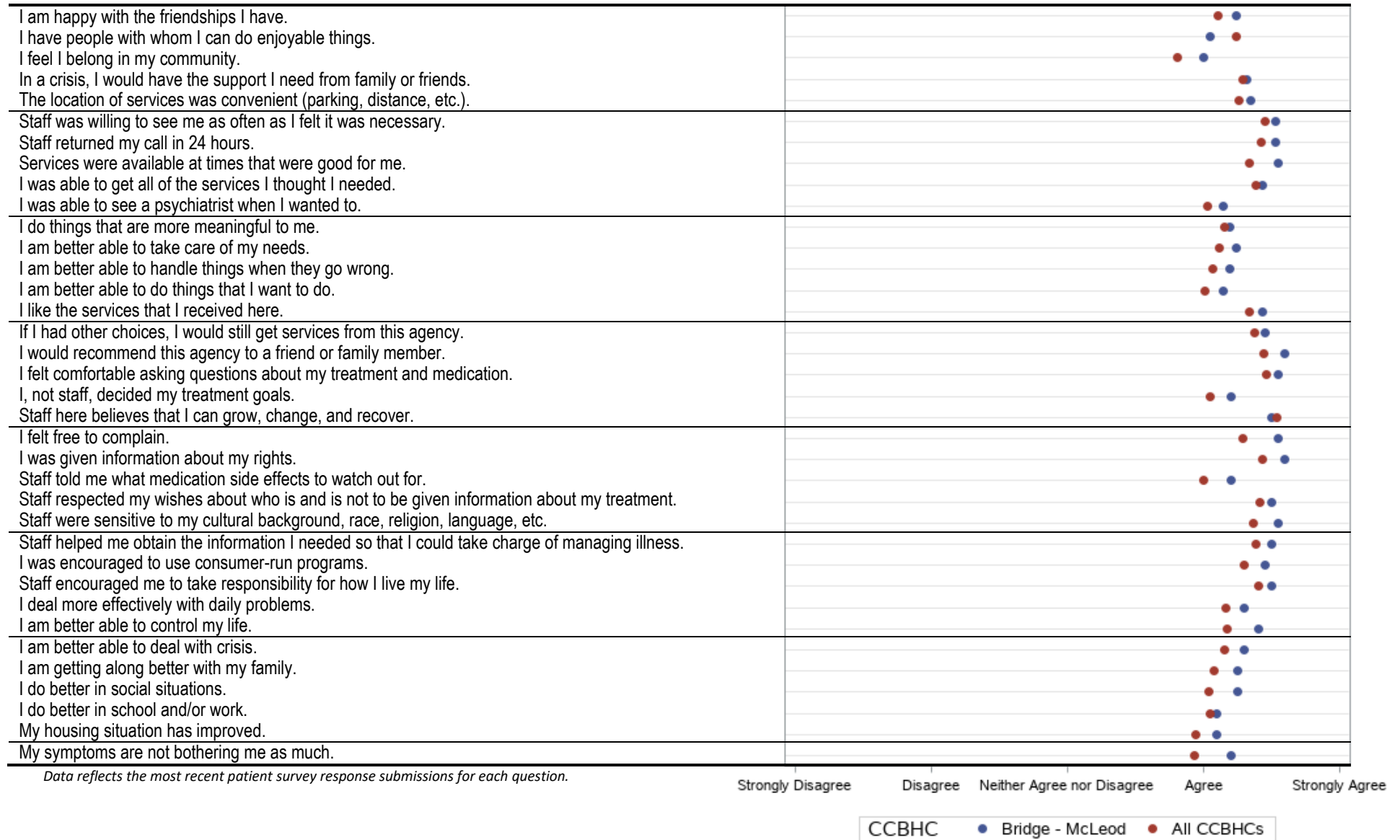


*\*Reflects survey responses for the Youth Consumer Satisfaction Survey and Parent/Child Consumer Satisfaction Survey.*



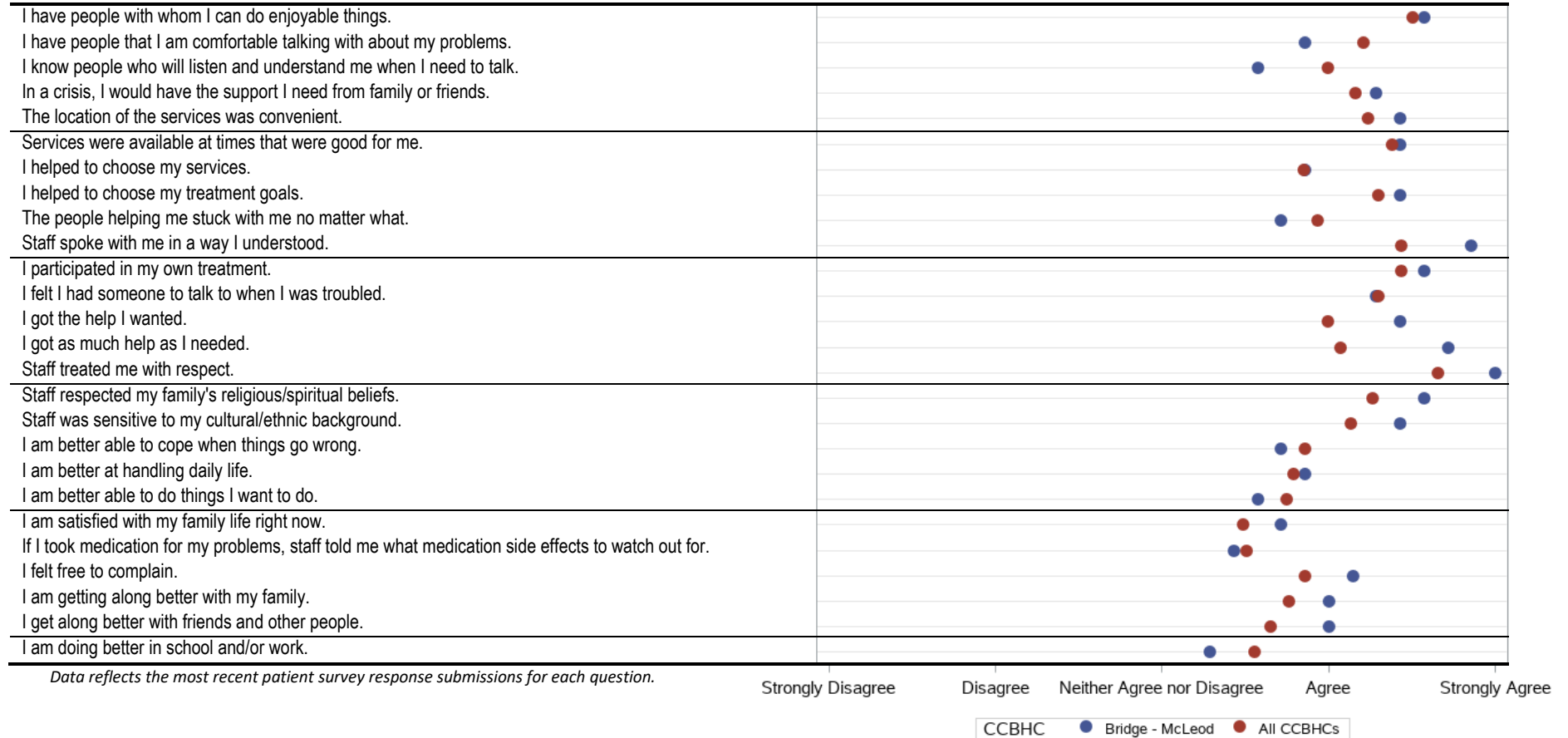
# Appendix A. Adult Consumer Satisfaction Survey Results

Figure 1. Adult Consumer Satisfaction Survey Average Results



# Appendix B. Youth Consumer Satisfaction Survey Results

**Figure 2. Youth Consumer Satisfaction Survey Average Results**



# Appendix C. Parent/Child Consumer Satisfaction Survey Results

**Figure 3. Parent/Child Consumer Satisfaction Survey Average Results**

